



Kingswood Place, Hayes, UB4 8FW

A beautifully presented BRAND NEW luxury built 1 bed apartment with approx 198 years lease situated in a modern development. Constructed with energy efficiency in mind, the apartment is brick built with aluminum double glazed window, underfloor gas fired central heating with Vaillant condensing boiler, contemporary fitted kitchen with integrated Bosch appliances and quartz worktops, double bedroom with fitted wardrobes, quality bathroom suite with Roca sanitary ware, overhead thermostatic rain shower, Karndean floor coverings & low energy LED down lights throughout. Further benefits include video entryphone system, allocated parking space, communal landscaped gardens & electric vehicle charging points. PLEASE CALL OFFICE FOR MORE DEATILS.

Located in an attractive development set back from the Uxbridge Road so ideal for shops & direct bus routes to Uxbridge Town Centre & Uxbridge Underground Station (Metropolitan Line) & Hayes Underground station(Elizabeth Line) Stockley Park, Brunel University & Heathrow Airport are also well services by several bus routes.

£280,000

Tel: 020 8573 9922 Fax: 020 8569 3495

254 Kingshill Avenue, Hayes, Middlesex, UB4 8BZ

Email: info@charrisondavis.com www.charrisondavis.co.uk

8 Azalea Court Kingswood Place, Hayes, UB4 8FW

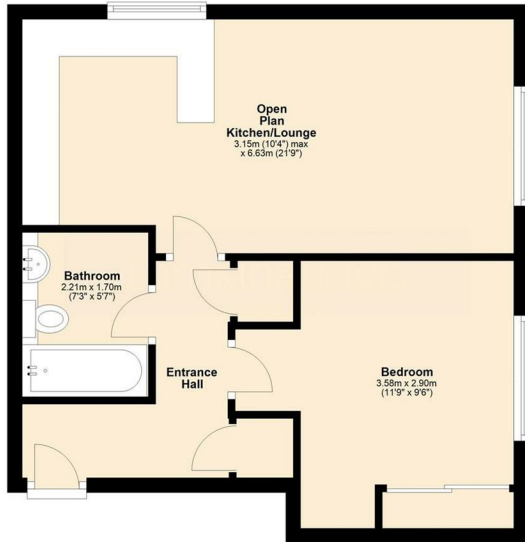


8 Azalea Court Kingswood Place, Hayes, UB4 8FW




8 Azalea Court Kingswood Place, Hayes, UB4 8FW

1 Bed 1st Floor (47 SQM)



8 Azalea Court Kingswood Place, Hayes, UB4 8FW

Energy Efficiency Rating

	Current	Potential
<i>Very energy efficient - lower running costs</i> <div> <div>(92 plus) A</div> <div>(81-91) B</div> <div>(69-80) C</div> <div>(55-68) D</div> <div>(39-54) E</div> <div>(21-38) F</div> <div>(1-20) G</div> </div>		
	85	85
<i>Not energy efficient - higher running costs</i>		
England & Wales	EU Directive 2002/91/EC	

8 Azalea Court Kingswood Place, Hayes, UB4 8FW

